

Airtable Drawing Release

Team 1732 - Mechanical Team
John Kloser

Hilltopper**Robotics**

Design Drawings

- Use standardized part numbering
- Use template
- Approved by mentor
- Save as pdf

1732standard.idw

- C:\Users\Public\Documents\Inventor 2019\Templates



Drive

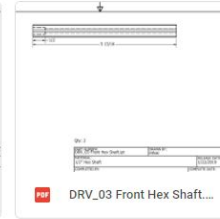
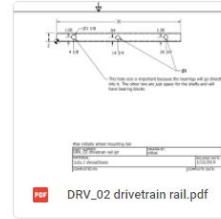
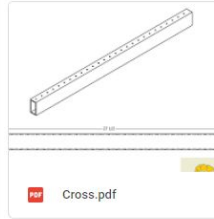
Search Drive

New

- My Drive
- Team Drives
 - Cortex
 - Mentors
 - Team
 - Community Activities (aka Outreach)
 - Competitions
 - Design
 - 2016 Season
 - 2018 Season
 - 2019 Season
 - Drawings
 - Drivetrain**
 - Elevator
 - Mechanisms
 - CNC

Team > ... > Drawings > Drivetrain

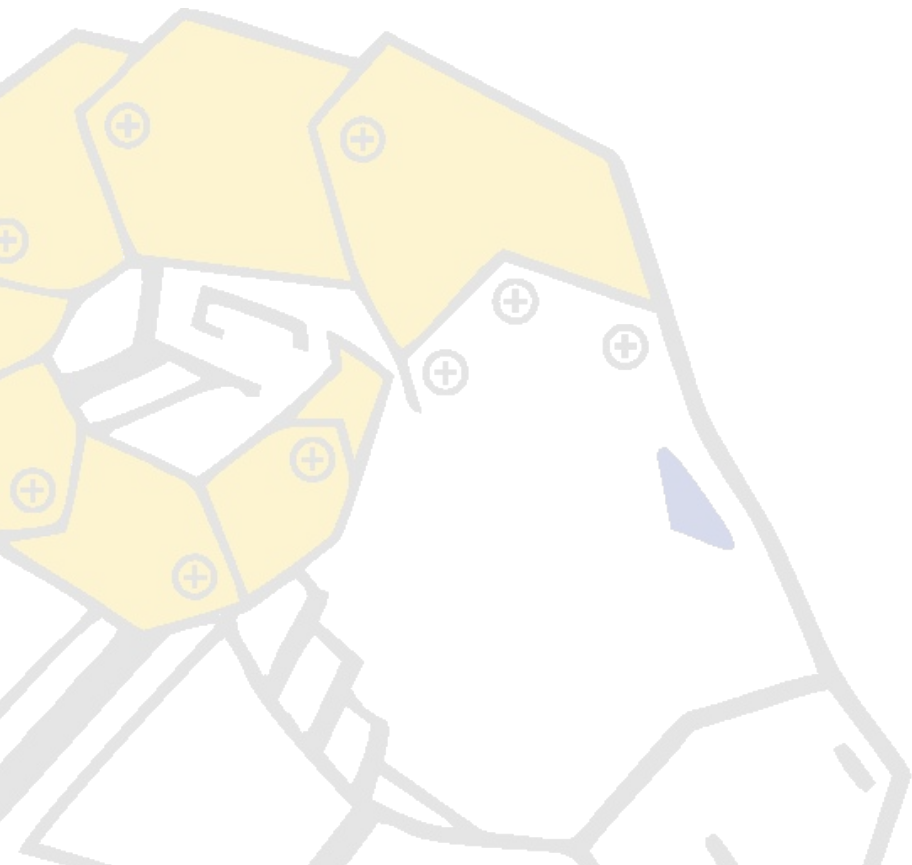
Files



Save Drawing

Team Drive\Design\2019 Season\Drawings\Subassembly

Submit Form



Form

Date

Kit Status *

Drawing

Drawing Number *

SubAssembly

Product *

+ Add

Quantity *


Priority Status

Submit

HilltopperRobotics

Manufacturing

- Print drawing
- Add student name
- Move to "Manufacturing"

PART NUMBER: Model iProperties Part Number		SHEET: 1 of 1	REV: Rev. Num.
DRAWN BY: Drawing iProperties Author		CHECKED BY: Model iProperties Checked By	
MATERIAL: Model iProperties Stock Number		RELEASE DATE: 1/21/2019	
COMPLETED BY:		COMPLETE DATE:	
		HilltopperRobotics	
2		1	

Inventory & Drawing Tracker

Product Inventory Locations Supplier Purchase Orders Design Release

Kanban Stacked by Kit Status Customize cards Filter Sort Color

Uncategorized Submitted Manufacturing - Student Manufacturing - CNC Completed Backorder

Submitted

- 1/22/2019 DRAWING <https://drive.google.com/open?id...>
- 1/23/2019 DRAWING <https://drive.google.com/a/muhs...>
- 1/23/2019 DRAWING <https://drive.google.com/a/muhs...>

3 records

Completed

- 1/15/2019 DRAWING <https://drive.google.com/open?id...>
- 1/15/2019 DRAWING <https://drive.google.com/open?id...>
- 1/19/2019 DRAWING <https://drive.google.com/a/muhs...>
- 1/19/2019 DRAWING <https://drive.google.com/a/muhs...>
- 1/19/2019 DRAWING <https://drive.google.com/a/muhs...>
- 1/22/2019 DRAWING <https://drive.google.com/open?id...>

6 records

Backorder

- 1/19/2019 DRAWING <https://drive.google.com/a/muhs...>

1 record

Submitted

- 1/22/2019 DRAWING <https://drive.google.com/open?id...>

1 record

Manufacturing - Student

- 1/19/2019 DRAWING <https://drive.google.com/a/muhs...>

1 record

Manufacturing - CNC

No records

Uncategorized

No records

HELP

SHARE

BLOCKS

Q

+ New st

<https://table.com/9h1eDhkaCaYCTSh46uwwwEVRfDhR1E27/arrwTufid1E7w0A>

Completed Parts

- Add weight
- Label the part
- Place in correct subassembly kit

Inventory and Purchase Orders

Product Name	Location	Inventory	Units Ordered	Units Used	Cost per Unit	Supplier	Purchase Orders	Design Orders	Notes
2 x 1 x 0.1 VersaChassis	Mechanical - Stock	47 units	192	145	\$0.59	Vex Pro	#73050 - Vex Pro	1/22/2019 1/15/2019 1/15	
60T VersaPulley Kit	Mechanical - Bolts	4 units	4	0	\$9.99	Vex Pro	#818844 - Vex Pro		
Single Speed Single Reducti...	Mechanical - Motor	8 units	8	0	\$59.99	Vex Pro	#73050 - #818844 - Vex Pro		
Hatch Panel (Versa Disc)		5 units	5	0			#6562 - Vex Pro		
1 x 1 x .1 VersaFrame Plastic	Mechanical - Stock	59 units	59	0	\$0.47		#73050 - Vex Pro		
104T, 15mm Belt	VersaPlanetary Kits	5 units	5	0	\$13.99		#73050 -		
110T, 15mm Belt	VersaPlanetary Kits	5 units	5	0	\$13.99		#73050 -		
100T, 15mm Belt	VersaPlanetary Kits	5 units	5	0	\$13.99		#73050 -		
160T, 15mm Belt	VersaPlanetary Kits	2 units	2	0	\$13.99		#73050 -		
VersaHub, 1/2" Hex	VersaPlanetary Kits	4 units	4	0	\$8.99		#73050 -		
VersaHub, 1/2" Hex, Plastic	VersaPlanetary Kits	4 units	4	0	\$2.99		#73050 -		
42T, 18mm Pulley	VersaPlanetary Kits	10 units	10	0	\$9.99		#73050 -		
30T, 9mm, 1/2" Hex Pulley	VersaPlanetary Kits	23 units	23	0	\$15.99		#73050 -		
1 x 1 x 0.125 ALUM Angle	Mechanical - Stock	0 units	0	0	\$0.19				
1 x 1 x 1/16 ALUM Angle	Mechanical - Stock	0 units	0	0	\$0.10				
2 x 0.125 ALUM Bar	Mechanical - Stock	0 units	0	0	\$0.15				
1 x 0.125 ALUM Bar	Mechanical - Stock	0 units	0	0	\$0.09				
2 x 1/16 ALUM Bar	Mechanical - Stock	0 units	0	0	\$0.14				
1 x 1/16 ALUM Bar	Mechanical - Stock	0 units	0	0	\$0.07				
1 x 1 x 0.125 ALUM Tube	Mechanical - Stock	0 units	0	0	\$0.48				
1 x 1 x 1/16 ALUM Tube	Mechanical - Stock	0 units	0	0	\$0.32				

79 records Sum 2254 Sum 356 Rng \$150.95

Bill of Materials

- Is it used on the robot?
- Did we fabricate it?
- Did we buy it?
- Was it in the Kit of Parts?